



| Stafford | ST18 0AH

Offers In The Region Of £500,000

 **Webbs**
estate agents

Summary

**** MOTIVATED SELLER ** LARGE DETACHED BUNGALOW ** APPROX THREE QUARTERS OF AN ACRE PLOT ** FOUR BEDROOMS ** TWO RECEPTION ROOMS ** TWO BATHROOMS ** CONSERVATORY ** COUNTRYSIDE VIEWS ** POTENTIAL THROUGHOUT ** VILLAGE LOCATION ** VIEWING ESSENTIAL TO APPRECIATE LOCATION AND SIZE ****

WEBBS ESTATE AGENTS are pleased to market this large four bedroom detached bungalow, set on a approximately three quarters of an acre plot, in the ever popular village of Hopton. Viewing of the property is essential to fully appreciate not only the size and space on offer but also the potential throughout. The property is located close to amenities, Stafford Town Centre, useful transport links and a short distance to the Shugborough Estate and Cannock Chase. The internal accommodation briefly comprises; Entrance hallway, living room, dining room, kitchen, utility room, conservatory, sunroom, four double bedrooms and two bathrooms. The property also has the benefit of a large plot, countryside views, driveway and garage.

Key Features

- 3/4 ACRE PLOT
- MOTIVATED SELLER
- TWO RECEPTION ROOMS
- CONSERVATORY
- POTENTIAL THROUGHOUT
- LARGE DETACHED BUNGALOW
- FOUR BEDROOMS
- TWO BATHROOMS
- COUNTRYSIDE VIEWS
- VIEWING ESSENTIAL

Rooms and Dimensions

Hallway

Living Room

21'10 x 11'0 (6.65m x 3.35m)

Dining Room

13'3 x 10'9 (4.04m x 3.28m)

Sunroom

14'6 x 8'10 (4.42m x 2.69m)

Kitchen

8'1 x 10'5 (2.46m x 3.18m)

Kitchen

11'6 x 9'5 (3.51m x 2.87m)

Utility Room

5'2 (1.57m)

Conservatory

11'9 x 4'7 (3.58m x 1.40m)

Hallway

Bedroom 1

11'10 x 15'4 (3.61m x 4.67m)

Bedroom 2

9'11 x 14'9 (3.02m x 4.50m)

Bedroom 3

9'10 x 12'3 (3.00m x 3.73m)

Bedroom 4

11'7 x 8'11 (3.53m x 2.72m)

Bathroom

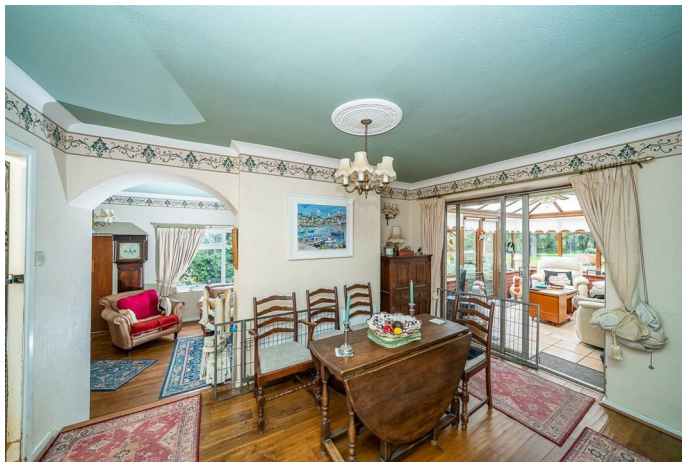
6'0 x 11'5 (1.83m x 3.48m)

Bathroom

8'2 x 5'4 (2.49m x 1.63m)

Identification Checks (R)







Webbs Estate Agents - endeavour to maintain accurate depictions of properties in Virtual Tours, Floor Plans and descriptions, however, these are intended only as a guide and purchasers must satisfy themselves by personal inspection.

